

Case Study

BESPOKE AUTOMATIC SLIDING DOORS, URBAN VILLA, GREATER LONDON, UK

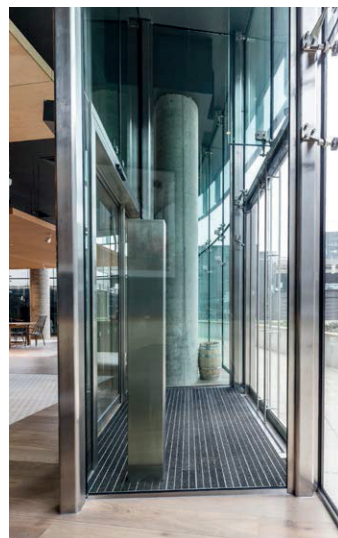
The tower at GWQ is the central feature of this award-winning regeneration project that includes the transformation of the glorious 1930s Art Deco Wallis House and highly contemporary new homes.

With 787 new homes set among green open courtyards, shops, cafés, offices, restaurants, a landscaped piazza and an iconic new tower.

The unique combination here is the stability of our entrances...
...in combination with the unique transparent design and underfloor hidden operators.

Great West Quarter is urban regeneration on a grand scale. Our Client Yuanda, found Bauporte Doors UK Ltd to undertake full design, manufacture and installation of its requirements.

Bauporte developed a very strong stainless steel framework construction around the door, to carry the façade of third party.



Summary

Project	Great West Quarter (GWQ) Shop Urban Villa
Client	Barrat London
Location	Brentford, Greater London TW8 0BW, UK
Architect	Assael
Contractor	Facades Yuanda UK Co Ltd.
Entrance	2 Full-Vision swing doors and 1 Elegance sliding door

www.bauporte.com

22 Bloomsbury Square, London, WC1A 2NS, United Kingdom
T +44 (0)203 41 15 023, F +44 (0)203 41 15 365, sales@bauporte.com

Zandsteen 14, 2132 MR Hoofddorp, The Netherlands
T +31 (0)23 55 75 924, F +31 (0)23 55 75 923, sales@bauporte.com

Making an entrance