

Case Study

BESPOKE OFFICE ENTRANCE WITH 2 FULL GLASS CFV 2400 AY TALL AND 1 CFV 2325 AY TALL REVOLVING DOORS AND 2 FULL-VISION BDD150 PASS DOORS. 6 BEVIS MARKS BURY COURTY, LONDON, UK

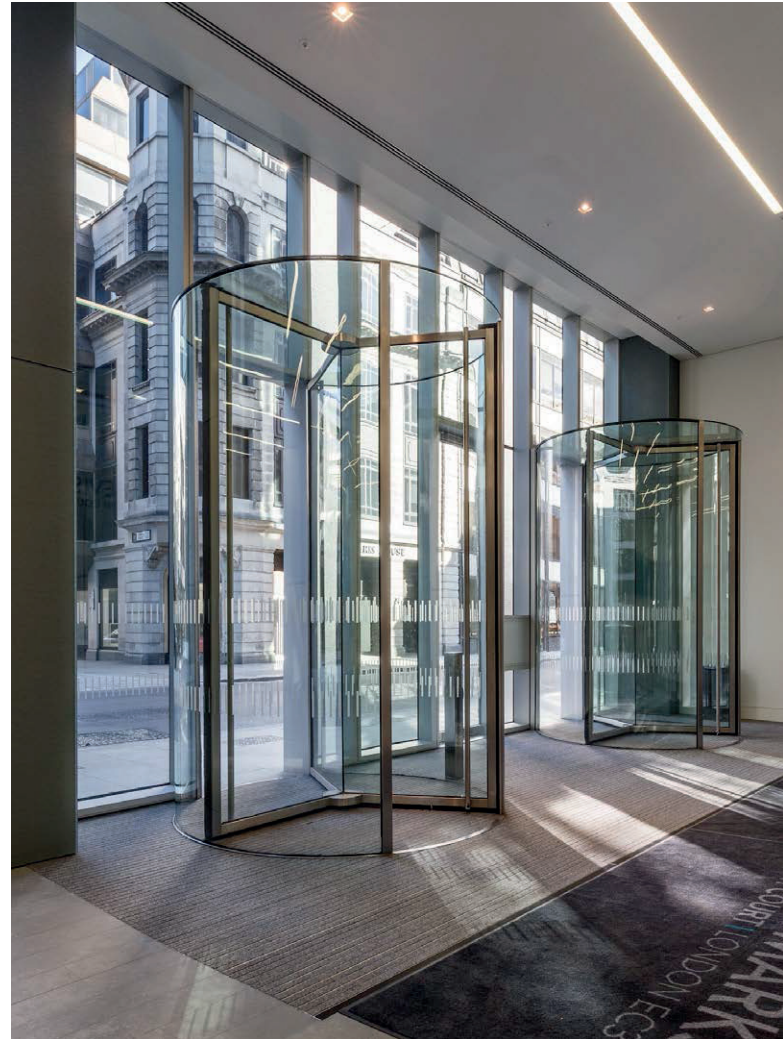
6 Bevis Marks is a striking signature building designed by Fletcher Priest providing 160,000 sqft of high performance office space. Organised over 16 floors, it offers tenants an array of in house business and staff services. It boasts private terraces and a roof garden on the upper floors.

6 Bevis Marks is situated in the heart of the world's corporate and financial centre as well as offering a huge diversity of lifestyle amenities. This exciting development is a perfect base for all occupiers.

The Bury Court entrance (south) with a Tall bespoke full vision CFV 2325 AY revolving door. The Full-Vision BDD115 Pass Door gives direct access to the City's world renowned insurance district.

Bury Court links to the St Mary Axe Plaza (home of The Gherkin) with Lloyd's of London only moments away. The Bevis Marks entrance (north) with 2 bespoke full vision CFV 2400 AY Tall revolving doors, enables rapid access to the financial district, Liverpool Street Station, Devonshire Square and Broadgate.

First impressions count and the reception at 6 Bevis Marks will impress.



Summary

| | |
|-------------|---|
| Project | 6 Bevis Marks |
| Location | 6 Bevis Marks Bury Courty, London, UK |
| Architect | Fletcher Priest Architects |
| Contractor | Skanska |
| Entrance | Bespoke office entrance with 2 Full Glass CFV 2400 AY Tall and 1 CFV 2325 AY Tall Revolving doors and 1 Elegance BDD150 pass door |
| Dimensions: | height revolving doors: 3500 mm, height pass door: 3250 mm |

www.bauporte.com

22 Bloomsbury Square, London, WC1A 2NS, United Kingdom
T +44 (0)203 41 15 023, F +44 (0)203 41 15 365, sales@bauporte.com

Zandsteen 14, 2132 MR Hoofddorp, The Netherlands
T +31 (0)23 55 75 924, F +31 (0)23 55 75 923, sales@bauporte.com

Making an entrance