

# Case Study

## BESPOKE ROYAL FULL VISION RFV 3400 AYN TRANSPARENT OFFICE ENTRANCE. PIET HEIN BUILDINGS, AMSTERDAM, THE NETHERLANDS

The development of the Piet Heinkade east of the Central Station is the backbone of the Southern riverbank of the IJ in Amsterdam. Here the Central Station connects to the newly developed Eastern and Western Docklands. The complex Piet Hein Buildings is located right next to the Passengers Terminal Amsterdam.

The complex consists of three office buildings, where large numbers of people are employed. The main entrances should be available for various types of traffic, such as:

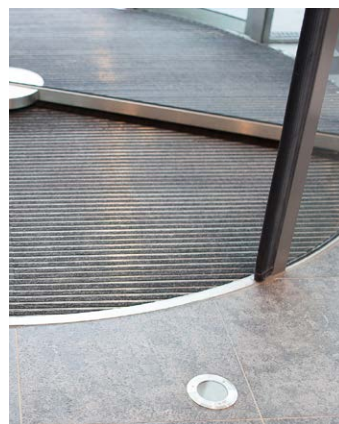
Disabled persons, both inside and outside operation is possible, in which the door operates at half speed and adapts to the speed of the person passing by. Wheelchairs, mobility scooter, disabled on crutches, which all have a safe and comfortable passage.

### SEVERAL OPTIONS ARE AVAILABLE

The emergency escape/emergency entrance integrated in the door. When the door receives a signal of the fire alarm the wings of the rotating part will be able to fold away outwards and people are able to leave the building.

In closing times the fire department can enter the building through the door with a key or signal. The wings of the rotating part will be able to fold away inwards. Baupo

te designs these and other features in-house. Baupo



## Summary

Project:	Piet Hein Buildings
Client:	Piet Hein Buildings, Haarlem
Location:	Piet Heinkade, Amsterdam, the Netherlands
Architect:	Hans van Heeswijk Architecten
Contractor:	Blitta BV
Entrance:	Royal Full Vision Revolving Doors; model RFV 3400 AYN
Dimensions:	Ø 3400 mm, height 3050 mm

[www.bauporte.com](http://www.bauporte.com)

1 Northumberland Avenue, Trafalgar Square, London, WC2N 5BW  
T +44 (0)207 55 48 757, F +44 (0)207 87 25 611, [sales@bauporte.com](mailto:sales@bauporte.com)

Zandsteen 14, 2132 MR Hoofddorp, The Netherlands  
T +31 (0)23-55 75 924, F +31 (0)23-55 75 923, [sales@bauporte.com](mailto:sales@bauporte.com)

Making an entrance